



# ANNUAL REPORT 2018/19

St Mary's Hanwell  
Annual Parochial Church Meeting  
Sunday 7th April 2019



# Contents

Welcome 3

Church Ministry 6

Mission & Outreach 14

Finances 18



# Welcome

## Welcome to our annual report booklet for 2018/19!

The year has been hallmarked by us stepping out in faith and seeing new projects come into being, and some significant changes to several key outreach events. It has also been a year of growth both in terms of numbers, but also in depth as we have introduced new discipleship opportunities through Alpha and a follow-up group. For Susy and I growth has had a very personal dimension as we celebrated the arrival of our daughter Florence last August.



Our weekly services have seen steady growth this year with our regular congregation numbers increasing by 4%. In particular our monthly family service has seen attendance rise by 10% and our Wednesday communion service has seen a 4% rise on the previous year after two years of falling average attendance figures.

Over the past 5 years St Mary's average Sunday congregation has grown by 6.5%. It is amazing to see that we have on average 40 children attending our Junior Church each week.

In order to sustain this growth we have been putting in place appropriate structures to assist with the smooth running of church. The Standing Committee meet 6 times a year to plan the PCC meetings and deal with matters between meetings and we meet as a Leadership Team (clergy and wardens) on a monthly basis.

Alpha In the summer term we held our first Alpha course for many years and had 13 guests attend, this was followed up with the Prayer Course in the autumn which was well attended by the Alpha alumni.

Outreach We took the decision to move our Christmas Fair to October to refresh the event and relieve time pressure at Christmas, and along with a BBQ and several new stalls the Autumn Fair formed one half of our Harvest weekend. The second half was our Harvest family service followed by a Hog Roast Lunch with over 150 people staying to eat together including many guests.

The other significant change was to move from one to two Christingle services on Christmas Eve. We sought to better cater for the high numbers who attend and improve their experience. As a result, we saw 100 more people join us than the previous year.

Messy Church After six years we took the difficult decision to pause our Messy Church, and are currently seeking discernment on how we take this important area of outreach forwards, and what form this might take.

Reconnecting with local mission has been another key theme for us as a church family. It is our privilege to host the Ealing Churches Winter Night Shelter each year. Proceeds from our Autumn Fair, along with a grant and donations allowed us to create a shower room at the Hall for the guests to use.

Christmas is a crucial season of outreach and mission for us and we saw attendances grow across all our services as we encouraged our church family to be involved by volunteering, coming along to events and inviting others.

Schools work We have been building our relationships with several local primary schools throughout the year, through a mixture of clergy taking school assemblies at Hobbayne School, and by hosting school groups from Mayfield and St Marks schools on an interactive visit to St Marys.

Make Lunch Through the summer and autumn we have been on a process of discernment for a new mission project and in January 2019 the PCC gave its backing for us to pilot 'Make Lunch' (a lunch club aimed at tackling holiday hunger in primary aged children in our community) and our first meal will be served during Holy Week in April 2019.

During the year we had several changes of personnel in key roles. At the APCM Chris Cosstick stepped down as churchwarden, and Tim Barnes was duly elected to join Helen White as churchwarden. Our Hall Manager Paul Davies moved away from Hanwell, and administrative duties for the Hall were taken on by our Administrator Samuel Horsley. Sam left that role in May 2018 and, after a formal recruitment process, Charlie Wheeler was appointed and started in August. Gilly Clarke managed the hall for 2 months' before Charlie joined us. A new team of volunteers has been established to look after the maintenance of the Hall, and our first 'big clean' maintenance day took place in August.

At the beginning of 2019 we felt that God is calling us to a year focusing on mission, establishing new local projects in Make Lunch, and consolidating much of the great work we are already doing. We will be looking to establish new Mission Partners this year for us to both support financially and prayerfully, and weave into the fabric of life here at St Mary's. I look forward with great expectation at all God has in store for us in the year ahead.

**Rev. Andrew Dand - Rector**

---

## Churchwardens' Report

A huge thank-you from the Churchwardens:

We would like to thank the many people who have given their time, energy and expertise to help provide the warm welcome and hospitality, which St Mary's has become known for - and to take this opportunity to ask for volunteers to join them:

- Our wonderful teams who clean the church out of love and the fun of working together.
- Our sidespeople who provide such a warm welcome.
- Our flower arrangers, who help make the church look so beautiful.
- Our bellringers, whose peals are also part of our special welcome.
- Our Junior Church and Youth Leaders, who inspire our younger members.
- The Players who bring adults and children together for the Panto, to welcome and entertain both us and our local community in a lovely out-reach.
- All of these are looking for more people to join them - a good way to get involved and make new friends. So please speak to the leadership team, or those who have written the reports in each section to find out more.

Special thanks also go to:

- Sam, our Administrator, and Paul, our Hall Manager, who moved to pastures new last summer.
- Helen and Chris Cosstick, who so generously welcomed Charlie, our new administrator and hall manager, into their home to use Chris's office.
- All those who helped put on the brilliant inaugural Autumn Fair and Hog Roast.
- Those who gave their time to help with the Christmas services - particularly as we had the extra Christingle services this year.
- Those who helped to run our Alpha course.
- Derek Stoddart and Dave Sebuyira, who put so much into keeping our buildings maintained.
- Our fantastic church council, for their prayerful stewardship.

...and, of course, a special thank you to all those we have not specifically mentioned, who do so much in front of and behind the scenes.

*Helen White and Tim Barnes*

# Church Ministry

## Prayer

Opportunities for prayer “together” are wide and varied at St. Mary’s, including:

Prayer before our main 9.30am Sunday service. A small group of us have prayed together in the gallery before our main service for many years. However this has recently been re-launched to encourage more participants to come together before the service, with a new more central location and perhaps a more vibrant feel (building on our experience before the Christmas services).

Prayer Ministry continues to be offered at the side altar after communion at our 9.30am service, with a steady flow of “takers”. Anyone is most welcome to come for personal prayer, whatever the need or simply to seek more of God!

Other parish prayer activities include: a monthly Prayer Night (one hour) in church, to seek God’s heart together for our church. This now has a new regular slot of the first Monday evening in the month; a daily prayer diary (Prayer Focus) given out to everyone, with ideas for praying for our church and community; an email ‘prayer circle’ of about 20 congregation members who receive prayer requests as they arise; and occasional Quiet Mornings in church - one is due to take place on Saturday 16th March this year.

*Sheila Moore*

---

## Junior Church and Crèche

The Junior Church is during the 9.30 Sunday service when babies and children leave the service to worship in a fun, age appropriate way with songs, Bible stories, games and crafts, returning to the service for the Eucharist. This is enabled by a great team of 15 volunteers on a rota basis.

Our Junior Church continues to grow in numbers with lots of new families. We have 86 children and babies registered with a weekly average attendance of around 40.

We begin worship all together by singing (accompanied by our talented musicians) and praying, before we split into four smaller age groups. Crèche go to The Ark, a fabulous space ideal for pre-school children and their parents to interact. Primary school children have planned biblical themes and interactive learning.

Creche is available for pre-school children during the 9.30am service. We have 4 leaders who operate on a rota, with story telling followed by a craft or activity each week. We also have toys, books and a baby area. Children attend with a parent, although we are introducing parent volunteers (with a DBS check) to support the leader during sessions, so that children can be left in our care.

*Helen Cosstick*

---



## Church Openings

The year saw us continue with opening the church on three afternoons and to provide those coming into the church with a flavour of the St Mary's experience.

This involves opening up the crypt and bell tower to allow visitors to explore these two areas which are normally off-limits. Add this to having a children's area, a chance to look at local history, lighting candles and a nice cup of tea before you go, means that church really is fun.

Equally important is the opportunity to learn more about the history of the church and its architecture, as well as what we as a church are doing today.

We were very pleased to welcome a number of new helpers this year; the more help there is, the more we can lay on for those who attend.

We maintain our pattern of opening on the afternoons of New Year's Day, Easter Sunday and Remembrance Sunday and anticipate continuing this during 2019/2020.

It was sad to say goodbye to Mildred Mansfield who has stepped down after many years of faithful support for this initiative; she has been a wonderful example to us all in the way in which she has welcomed so many people during her time on the team.

Our thanks to all who have volunteered during 2018/9 and we look forward to 2019/20 come rain or shine!

We set the target to open the church every Sunday afternoon between Easter and the end of August and with the exception of three Sundays, this was achieved.

This cannot be done without enthusiastic support and we were fortunate that so many people volunteered to help, some for the first time.

It is a privilege to be able to share our beloved church with the many visitors who are attracted by an 'open door' and a warm welcome. This is an important part of our mission.

An interesting by-product of being part of the team is that you become more knowledgeable about the church, its history and its work today; in the process informing those who are visiting.

All who come through the door are impressed with what they see and we hope will come back for more!

Look out for details for the 2019 openings and make sure you put your name down early.

*Chris and Helen Cosstick*

---

## Youth

Our youth continue to enjoy their wonderful private space in Ark 2, and we have a strong group of young people to be proud of. Not that all of them get out of bed in time every week!

We are however really struggling for leaders and helpers. To avoid us having to cut the number of sessions offered it would be wonderful if anyone felt called to volunteer, one Sunday a month or even less is fine, just to spend half an hour in Ark 2 with us.



You don't need to feel ready to lead sessions, there are always two adults, just being there and willing to engage with our young people is the qualification. Please get in touch with me directly, or via Andrew or Helen, if you'd like an informal chat about this genuinely rewarding way to help our youth engage with their faith.

***Christopher Pilkington***

---

## Bellringing

Unfortunately 2018 has been a very difficult Year. By the end of the year we were down to 2 ringers and 3 learners. This made it very difficult to keep our commitments to ring for Sunday services and for weddings. This was only made possible by visiting ringers mainly from Ealing.

We did however ring for two National events: 1st the 100th anniversary of the Royal Air Force and 2nd on Remembrance Sunday ringing half muffled to remember all those killed in WW1. In the "Open Afternoon" we rang with open bells to celebrate the end of WW1. We had over 40 people come up to see the ringing. I hope in 2019 with our learners coming on we will be able to keep the bells ringing for 2019.

***John Barrance***

---

## Cleaning Team

Thanks so much to our band of cleaners who keep our beautiful church clean and tidy. Many churches have to pay for cleaning services but we are very fortunate to have twelve loyal folk who love to serve in this way.

Our teams take a turn once a month, mostly on Saturday mornings, but one team cleans on Thursday mornings. We would love to welcome additions to the teams. That would mean that we can tackle extra chores like cleaning windows and removing candle wax from the carpet! If you would like to join a team please speak to Helen Cosstick

***Helen Cosstick***

---



## Website

Our website has continued to be a great source of information this year, with thanks due again to Billy Mo for his technical wizardry. In the background Andrew and Charlie have been working on an all-new site, which we hope to launch very soon. We will be really keen to receive feedback.

*Simon Croyden*

---

## Churchyard

A busy year in the churchyard! The very dry weather during the summer months caused problems; ground shrinkage meant holes appeared around a couple of gravestones requiring emergency repairs to avoid children falling through into the vaults below!

We also had concerns about a big ash tree at the top of the lower churchyard, which looked dead and could have been a safety hazard, especially in high winds. Ealing Council reacted quickly and their tree surgeons felled the tree, along with two other ash trees in poor condition.

They also trimmed a number of other trees, including the yew tree in the south west corner, which has opened up the churchyard to good effect.

The paths, which were not in good condition, have been repaired by the council and are now in much better shape and less likely to form a trip hazard.

The final stage of the long-term project to renew all the fencing around the churchyard is underway with a new fence being constructed between the church and the flats next door, and then a stretch of fencing along the western boundary. Thanks to Martin Bedborough for his assistance.

The mowing season seems to extend longer with every passing year and our grass cutting team of John Hunt and Dave Sebuyira worked hard to make sure the churchyard was looking at its best.

Colin Wilcox has done an excellent job with the flower beds and his efforts to introduce more plants that are drought resistant has improved the front churchyard immeasurably.

The Gainsborough daughters' tomb had attracted considerable interest this year following the major exhibition of the artist's work in London. Whilst Gainsborough himself is buried in Kew, his daughters who lived in Acton were buried in the churchyard at Str Mary's.

The churchyard is a very special place so please feel free to walk round and enjoy.

*Chris and Helen Cosstick*

---

## Refreshment Team

The gift of generous hospitality is very precious and we love our “real” coffee, choice of fruit teas and good quality biscuits after the 9.30 service on Sundays. It’s a time when we can greet each other and of course get to know people who are new to our congregation.

Believe it or not our 10 o’clock service on Wednesdays practices generous hospitality too, thanks to Helen Cahalane who brings the milk and Andrew who makes the coffee. We have a warm and friendly gathering after the communion service.

Thanks so much to all of you who offer this act of service and those who give gifts of biscuits and cake. If any of you would like to help with this ministry of hospitality on Sundays please speak to Helen Cosstick.

***Helen Cosstick***

---

## St Mary's Flower Guild

With not too many weddings, we have been able to concentrate on our usual arrangements. In September we held a Meeting and welcomed a new member Babette Jamieson who will be working whilst learning. Some very good new ideas came out of this. Sadly, we said goodbye to Barbara and Julie who have been with us for many years and we thank them.



I have been very grateful to Christiane who has taken on preparing our rota.

Finally I would like to thank the team for all their hard work. As before, that work has been very much admired.

***Moiray Rayner***

---

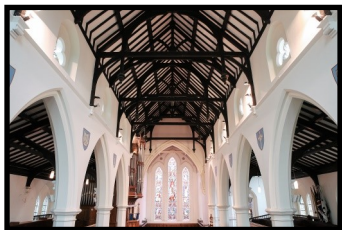
## Fabric Report

St Mary’s Church is a grade 2\* listed building

You may remember that in July 2016, a number of major repairs were carried out to the fabric of the building. This involved repairs to the roof and replacement or repair to a number of pieces of stone work. This project did not deal with all the problems of decay. Natural weathering of the stone work means that there will always be more that can be done, but only when funds are available.

We plan to ask the stonemasons to return early this year to survey the church and provide us with a priority list of future remedial work and costings. This work needs to be ongoing if we are to avoid major structural disintegration.

These issues were highlighted in the quinquennial report of Jan 2017 but obviously require highly specialist craftsmen. The remaining priority items listed in the report have been undertaken by either Dave Sebuyira, myself or other suitably qualified professionals. It is a long list so some minor jobs remain.



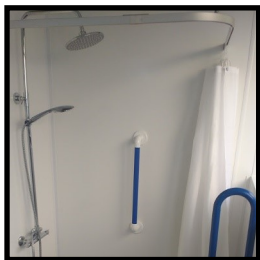
Our hall had started to look very “tired”, so we held a deep clean in the summer and tackled a number of cosmetic repairs, which improved the look and feel of it. We were also delighted to be able to install a shower for the Night Shelter - many thanks to Dave Sebuyira for the work he put into this, as well as to all those who donated towards it. We have just converted a storage/dressing room into an office for Charlie, our Administrator and Hall

Manager. It will be good to have him “on the spot”. Next projects are replacing the stage curtains, which sadly tore during the last Panto - and then we need to tackle the kitchen, which is in real need of an upgrade.

If you notice anything in the church or hall that is in need of repair or not working properly then do inform either myself or one of the wardens. We don’t always see everything.

***Derek Stoddart***

### **The Church Hall**



The hall continues to host various events, classes and activities; from Yoga to Guitar Classes.

It is one of our key places for mission; with the Noah’s Ark Playgroup, the Winter Night Shelter & Messy Church we have been able to impact people’s lives with hospitality. We pray as we work towards Make Lunch that this becomes a blessing to families and compliments the mission that we are already doing.

Events such as the ever-popular Panto production in December, and the brilliant Jazz Nights headed up by Janik & Janik help to brighten up the place.

The Children Come First Nursery are soldiering on, as are the two principal Churches worshipping at the hall, the Ancient Church of the East and the Light of the World, together with other occasional Church groups.

The challenges of the hall are as diverse as the events hosted here, but with the help of many volunteers we’ve made progress in creating & sustaining a warm and inviting space. Special thanks to Derek for his help with all things maintenance. Thanks to Helen White who has always been there to offer a second opinion. Thanks to Dave Sebuyira for setting up the shower which has been enjoyed by the Night Shelter guests, and giving a taste for what the hall could begin to look like in the future.

We finally have an office space in the hall for myself and following administrators to be an active presence in the life of the hall. We pray this will make a difference in the way the church and the community interact.

A personal thanks from me to all of you who have welcomed me into the community. Even though I am only here during the week, I have felt very much part of this church community and really enjoy serving you as best I can. Thank you all.

***Charlie Wheeler***

## **Music**

Music and St. Mary's Choir continues to play a vital part in our worship. The anthems sung just before the communion have created another point of reflection in the Sunday morning service. Faure's Requiem and Irons' Wonderful Counsellor could not have been further apart musically, in length, or complexities of preparations, yet they both managed to communicate their respective messages effectively and touch the congregation. The choir has grown in active membership yet again with reinforcements to alto and tenor sections. So has the band, which with more frequent involvement in services sounds ever so tight. With both our groups being in good shape, I believe that even greater quality and variety of music will be achieved to enhance the worship further in the coming year.

***Jozef Janik, Music Director***

---

### **1st Hanwell Scout Group**

1st Hanwell Scout Group has had a very good year, we have 3 busy sections from the beavers to cubs and to scouts with the support of a brilliant set of leaders.

The highlight of the year for the scouts was winning the district's annual camping competition which is a hard weekend of camping discipline which is marked. The cubs have been busy working on badgework and going on visits to the fire station and learning about the work of the fire brigade. The beavers have had a creative year with busy Wednesday evenings completing badgework and being creative with artwork.

We are always on the lookout for more help in the sections to support the leaders and it also helps develop the young people. Please do enquire if you'd like to help out.

**Ben Douglas, Group Scout Leader**

---

### **Parish Electoral Roll**

2019 sees the preparation of new church electoral rolls, which means that everyone had to come off the roll and re-apply. This takes place once every six years ahead of the Annual Parochial Church Meeting ("the APCM").

The Roll is completed and published 15 days before the APCM by affixing to the notice board near the main church entrance door. Errors may be corrected but no further names can be added before the APCM.

Under GDPR rules the information provided on the Electoral Roll form can only be used for the purposes of the Roll and a consent form needs to be completed for the data to be used for other purposes e.g. informing people of a social event at the church.

**Beryl Bevan**

## St. Mary's Players

December 2018 saw another highly successful pantomime, in the best tradition of St Mary's, as the Players brought 'Aladdin' to the Church Hall stage.

Directed by Alan Browne, with Derek Stoddart as co-director, the audiences in a packed church hall saw the debut of Sophie Dand in the title role, ably supported by some of the more established Players. Once again there were plenty of opportunities for the younger actors, who acquitted themselves well.

The new stage mikes purchased by the Players enhanced the singing & dialogue. Complimentary refreshments were provided, with suggested donations for The Night Shelter & Children's Society.

We were delighted to welcome as our guests to the Thursday night performance some mums and children from the Ealing Women's Refuge, who had a great time. (Thanks are due to the Charity of William Hobbayne, which covered the cost of their taxis back and forth).

All in all a very enjoyable show, the Players helping to bring the local community together and showing that Christians can have a good time, as well as using the talents that God has given for the benefit of others.

Otherwise a quiet year, though there was a very useful Saturday morning spent having a good clear-out of old props and scenery under the church hall stage, together with a grand sorting-out of costumes!

The Players will continue to contribute towards improvement of, and new facilities for, the Church Hall.

We are always on the lookout for new faces, either in front or behind the curtain, so please let us know if you are interested.

**Mark Cosstick, Secretary**

---



# Mission & Outreach

## Messy Church

In September 2018 the Messy Church team felt that we were running low on energy. The core team had been there since the beginning, October 2012 and we knew that we were all in need of a break and new direction. We had organised an MC session (activities and crafts / interactive worship / hot meal for 40+ people) every month except for August and had been present at Hanwell Carnival every June for 6 years. We are immensely proud of what we achieved and what we did for our congregation in Hanwell and we know we touched many hearts. We ran until Christmas 2018 and went out with a celebratory and emotional nativity service. Thank you to everyone who got involved in MC, we couldn't have done it without you.

*Anna Woodhams*

---

## Noah's Ark

Our Noah's Ark is very popular, with many of our families saying that it is their favourite drop-in playgroup. We bring a Christian ethos of loving care to our families with a warm welcome for everyone. We cater for parents, grandparents and carers of pre-school children, with both halls at our Church Hall full of toys, ride-ons, slide, trampoline, books, crafts and jigsaws, plus a quiet baby area. We serve refreshments and have half-an-hour for singing and making music using instruments and puppets,

Our current team consists of Jo Bloomfield, Zoe Adams William Hepper and Helen Cosstick and Charlie Wheeler, our administrator, comes for a while to help set up.

This is an important example of outworking our Christian faith by blessing our local community.

*Helen Cosstick*

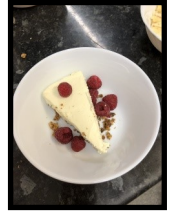
---





## Winter Night Shelter

Once again we have hosted Ealing Churches Winter Night Shelter on six Monday nights/Tuesday mornings in January and February. We use our Church Hall to provide shelter and hospitality for fourteen homeless guests who are referred to ECWNS by three agencies. Over twenty other churches are involved from the end of November to the end of March. Whilst at ECWNS guests have the stability and help to move on in their lives, finding accommodation, jobs, medical help and treatment for addictions.



This year we have been able to offer our guests the opportunity to take a shower, thanks to your generous fundraising and Dave Sebuyira's skill and time in installing it. It has been a huge success, in constant use in both the evening and the morning.

We welcomed new volunteers this year to join our amazing team of shelter preparers, hosts for the evening, kitchen staff, cooks who bring in meals, overnight watch volunteers, breakfast cooks, those who clear the hall, those who transport the beds and duvets to the next venue and those who launder the linen. Then there are those who pray, give money, offer clothing, toiletries, tea and coffee etc.

This is a chance to be Christians in action I believe that it isn't only our guests who receive God's blessing but our volunteers too.

*Helen Cosstick*

---

## Women's Refuge

We began the year in prayer for recruitment of new staff to fill the depleted workforce and for stability and continuity for the women, children and staff.

Acts of love were demonstrated in the instant response to a request to cover the Refuge in my absence at Christmas.

The wonderful sharing of talents by the St Mary's Players at the Pantomime is always a 'Big Hit' with the families.

The contributions throughout the year particularly at Harvest and Easter.

The new staff who are in awe at our generosity and who responded, "Thank You, this must be done out of love."

We end with thanksgiving for restored good relations at the House.

*Camille Adams, Link Person for the Refuge*

---

## **Ealing Foodbank**

Ealing Foodbank has opened a new café in Ealing Broadway due to the increasing demands in 2018. Client numbers have risen by 40%. The number of 3-day food parcels distributed by Ealing Foodbank has grown, from 5,007 year ending July 2017, to 7,021 in year ending 31 July 2018. In the calendar year 2018 there were 9,353.

3-day meal parcels given to people in food crisis by EFB.

This is due to changes in the referral system (EFB offer support to clients for as long as needed, as long as they remain engaged with their referring agent); changes beyond our control (Universal Credit was rolled out in Ealing in March 2018); and to increased use over the school summer holiday (41 families fed, 14 of whom have not used the Foodbank before).

80% of those helped by EFB said their crisis was caused by either low income, benefit change, no recourse to public funds, benefit delay or debt.

In addition; food donations are increasing, but are not keeping up with food needs, and for the first time EFB is regularly buying food where there have been shortages.

St Mary's made a significant contribution to EFB in 2018 - particularly over the Harvest and Christmas periods. Janet Fletcher is keen to come and give a talk to the congregation, and we will continue to co-ordinate donations throughout the year.

***Finn Connolly***

---

## **Children's Homes in Zimbabwe**

We have supported the Children's Homes in Zimbabwe for many years and been able to help them through some difficult times. Our donations in 2018 went to help provide food for the children and feed for their pigs and chickens as well as Christmas presents of shoes and socks.

The homes are doing well and are probably better off than many. They have an exciting building programme in hand to move from dormitories to houses.

We were delighted to learn that they are being supported by a local subsidiary of Barclays Bank and also a fund from the US Ambassador in Harare. Also their fund-raising team have substantial reserves held in the UK for them. So despite the current economic issues in Zimbabwe, their future seems secure.



The PCC have, therefore, decided to end our formal support to the orphanages from St Mary's as a church. However, if anyone wishes to donate on a personal basis, please contact Tass Darlington or Helen White for details.

***Helen White***

---

## **The Children's Society**

The Children's Society helps children of all faiths and none, including children at risk on the streets, with disabilities, young refugees, young carers or those within the youth justice system - the most vulnerable and the most disadvantaged children.

It is a social justice organisation founded on and driven by Christian values.

In 2018, the charity worked with 11,000 vulnerable children and young people <http://www.childrenssociety.org.uk/about-us/our-organisation>

Nearly all of this work relies on voluntary income.

Each year, £2 million is raised through house boxes. You too could have a box- please ask for one.

St Mary's supports the Children's Society:

Through boxes: about 40 of us have a Children's Society Box. However, that leaves an awful lot of families who do NOT have one.....what better way to clear out that loose change. In 2018 our boxes provided £1,128 of vital funding;

Christmas Service collections: in 2018 the total from the panto refreshments, Christmas services and carol singing came to £1,880.

A big thankyou to our MP, Stephen Pound and wife Maggie for providing our Christmas Eve carol singing refreshments including home-made mince pies (the best you will ever eat!), Christmas cake and more than just a wee dram. A wassailing we definitely did go - all the way to Midnight Communion!

It was great to have some new families and faces join us this year. Make it a date in 2019 -24th December 7p.m. - see you there!

This giving is a natural extension of Jesus' invitation to love our neighbours and by being involved, we are honouring Jesus' teaching that children are at the heart of God's Kingdom.

***Christiane Jenkins***

---

# Finances

## Treasurer's Report

Year Ended 31 December 2018

### GENERAL FUND

Total income £93,954

Total expenditure £125,725

Transfers to close unused funds £2,242\*

Shortfall £29,529

Total giving including Gift Aid was £86,985 in 2018. Giving through the bank has increased by some £6,000 over 2017 but there has been a reduction in one-off gifts and loose plate giving.

We successfully raised the funds to install a shower in the Church Hall for use by the Night Shelter at a total cost of £5,480.

We continued to support the Harare orphanages in 2018.

Our contribution to the London Diocesan Fund (LDF) was £80,600 (100% of that requested of us). The LDF pays for clergy stipends, pensions and training.

We joined in the 1% levy (£806) for extra help to Church Schools.

We employ an Administrator/Hall Manager, costing £13,128, although it should be noted that due to a change in staff, this is not the full year cost, which would be in the region of £15,000 including overhead expenses.

The General Fund shortfall, as in previous years, has been covered by the surplus hall income.

### HALL

Total income £46,606

Total expenditure £13,713

Carried forward from 2017 £28,001

Transfer to New Reserves Fund: £20,000

Surplus before transfer to cover General Fund Shortfall £40,895

Carried forward after transfer £11,366

Thanks to Gilly Clark who covered the Hall Manager's Role until the appointment of a new Administrator.

The surplus in the Hall Fund will be needed to cover the cost of the Administrator's salary if this role is to continue in 2019.

## ST MARY'S FABRIC FUND

Carried forward from 2017 £13,227

Income £7,500 (Hobbayne Grant)

Carried forward £20,727

No significant repairs were undertaken in 2018.

Thanks to Derek Stoddart, who continues to oversee the general maintenance of the Church and Hall.

## FUND CLOSURES

\*Some funds which are no longer required have been closed this year end and any balances have been transferred into the General Fund.

## FINANCIAL RESERVES POLICY

Under Charity Commission law the PCC are required to have a reserves policy in place to demonstrate that any potential financial risk to the ongoing mission of the church has been assessed. The PCC agreed to hold in reserves the equivalent of three months general running costs. In 2018 this sum was £20,000 and a separate fund has been set up to hold this sum by transfer from the Hall Fund.

## BUDGETS

PCC have agreed budgets for both income and expenditure in 2019 and the headlines for these figures are included in your papers. A balanced budget has been set and will be monitored during 2019.

## BANK ACCOUNTS

Barclays have introduced significant charges to our accounts and I am taking steps to reduce these charges by moving some of our transactions and our deposit account to CAF Bank.

*Yvonne Johnson, Treasurer*

---

